



HOME OF CONSTRUCTION

Company Presentation
March 2024

DORR

PORTAL

CONTENTS

1 PORR at a Glance

2 One-Stop Shop

3 Sustainability and More

4 Our References

OUR VISION



DORR

Home of Construction

To Build a Better World

1 PORR at a Glance



HOME OF CONSTRUCTION FOR MORE THAN 150 YEARS



Focus on building

We are and will remain a construction company that builds as much as possible itself.



One-Stop shop

From the idea to the design, build & execution to operation as a general or total contractor.



People Business

We build with and for people.
Because intelligent building connects people.



Technology leader

We are setting new benchmarks in the construction sector with state-of-the-art solutions.



Successful since 1869

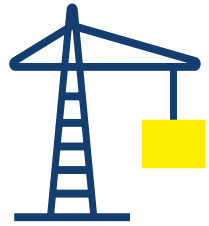
A tradition of being a visionary and pioneer, for over 150 years.



We live responsibility

Environmental. Social. Governance.
We are the most sustainable construction company on our home markets.

STRONG FIGURES PROFITABILITY & GROWTH



EUR > 6.5 bn
Solid output



EUR 130.7m
EBT

As of 31st December 2023



EUR > 8.4 bn
Top order backlog



~ 21,000
Staff
From more than 90 countries



DESIGN

BUILD

CONCEPTION

RENOVATION

OUR USP ONE-STOP SHOP

OPERATION

OUR RANGE OF SERVICES

THE RIGHT PARTNER FOR YOUR PROJECT

Building Construction



Infrastructure



Special Competencies



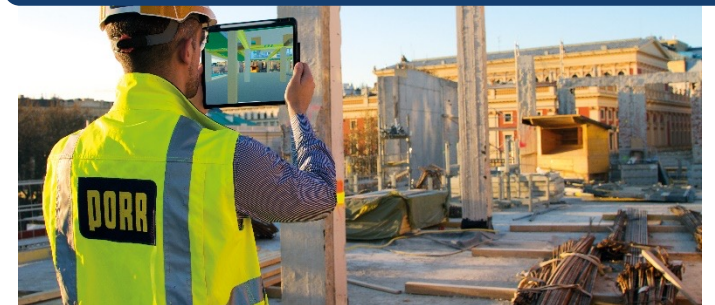
Civil Engineering



Environmental Engineering



Design & Engineering



OUR RANGE OF SERVICES

UNIQUELY BROAD RANGE

Building Construction

Revitalisation
Industrial construction
Shopping centres
Office buildings
Stadium construction
Healthcare facilities
Educational institutions
Residential construction
Hotels

Civil Engineering & Infrastructure

Power plant constr.
Bridge construction
Road construction
Railway construction
Tunnelling
Hydraulic engineering & harbours
Specialist civil engineering
Rock technology
Structural engineering
Pipeline construction

Special Competencies

High-Alpine construction
Asphalt and concrete production
Facade construction
Airport construction
Waterproofing
High-rise building construction
Slab Track Austria
Concrete slab construction
Facility management
Mastic asphalt
Healthcare
Public Private Partnerships (PPP)
Property Management
Steel construction

Environmental Engineering

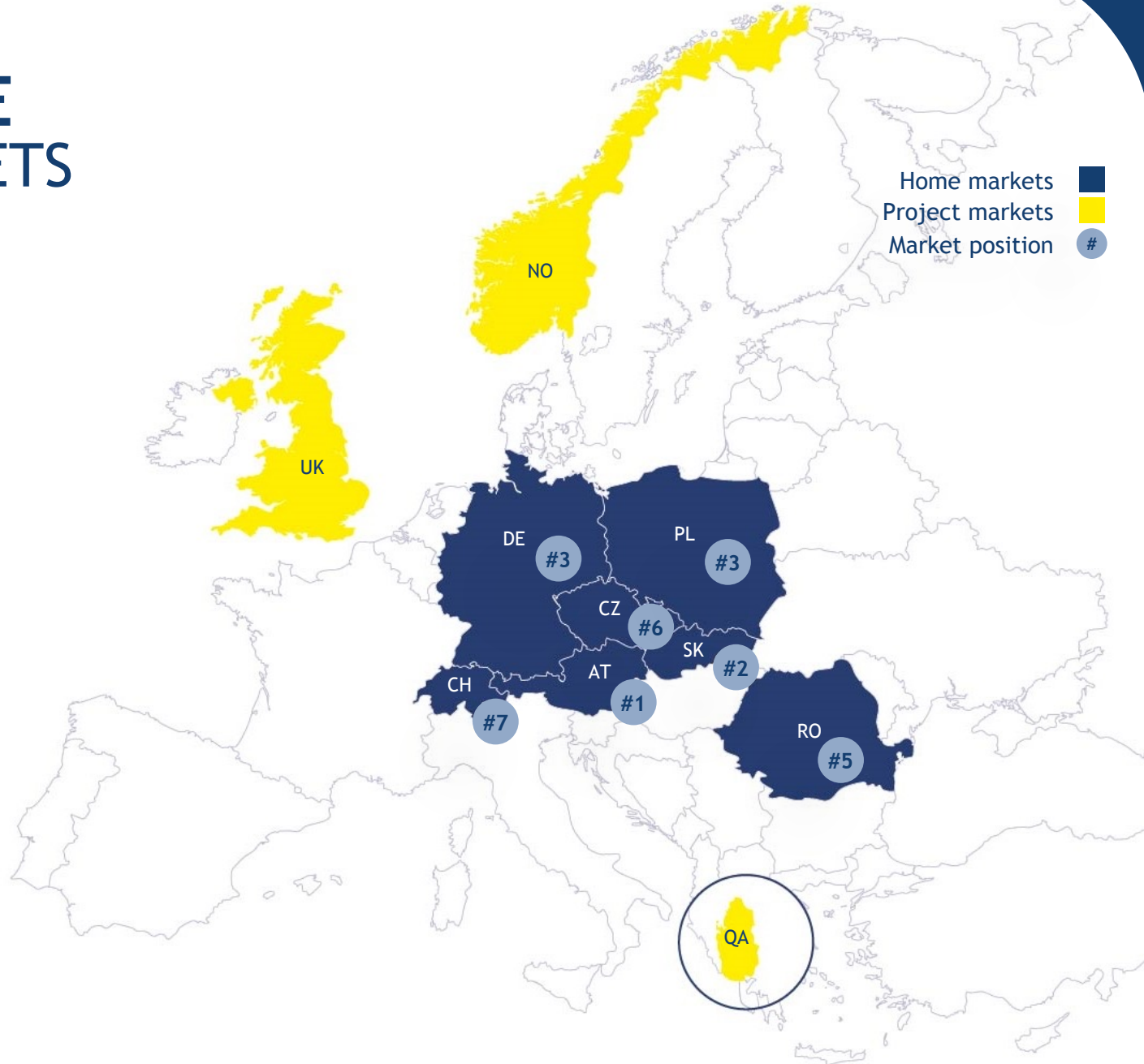
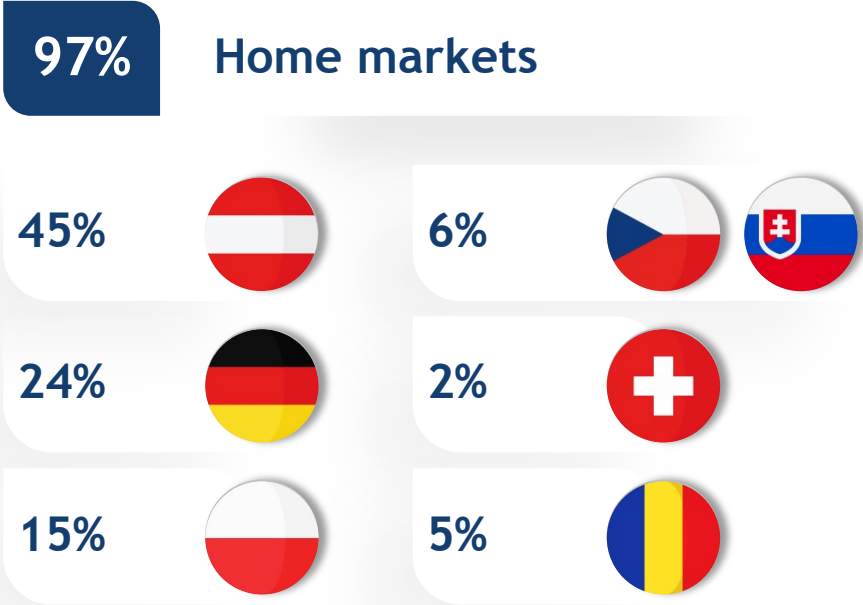
Demolition
Landfill operations
Remediation of contaminated sites
Waste management
Earthworks
Gravel production
Asbestos and pollutant removal

Design & Engineering

Architecture
Technical building services planning
Structural design
Building preparation
Construction supervision
LEAN management
Building Information Modelling (BIM)
General planning
Building certification
Fire protection

CLEAR FOCUS ON EUROPE

THE SEVEN PORR HOME MARKETS



The percentages correspond to the share of production output as of 31st December 2023

FOCUS ON INTELLIGENT GROWTH WITH GREEN AND LEAN

Intelligent Growth Green and Lean

Company

- Best in Class: In construction and technologies
- Build on leading market position
- Sustainable profitability ahead of revenue
- Strong equity position and efficient deployment of capital

**We inspire
our customers.**

Staff

- We live our PORR Principles
- The best - Best Place to Work
- Nurturing talent - lifelong learning for all of us
- We live diversity, equal opportunities and performance

**We build
on PORRians.**

LEAN

- Design-build contractor - one-stop shop for every process
- Innovation leader in construction technology
- Pioneer in digitalisation - improving quality and efficiency
- Lean, flexible and cost-conscious

**We rely
on LEAN Construction.**

ESG

- Clear commitment to ecological, environmentally-friendly construction
- Efficient and responsible use of resources and energy
- We act holistically in line with the circular economy
- Clear commitment to compliance and ethical behaviour

**We unite
economy, environment
and society.**

2 One-Stop Shop



SEGMENT AT / CH - AUSTRIA, SWITZERLAND

STRONG MARKET POSITION

Building Construction

Haus der Digitalisierung, AT



Civil Engineering

Aurach-Bridge, AT



Railway & Structural Eng.

Lake Zug, CH



Major Projects Building C.

Franklintower, CH



Industrial Construction

Zeppelin Hall, AT



Specialist Civil Engineering

DC Tower II, AT



Environmental Eng.

Quarry Gradenberg, AT



SEGMENT DE - GERMANY

FOCUS ON CONSOLIDATION

Building Construction

Overseas quarter Hamburg



Civil Engineering

Südlink ElbX



Structural Engineering

U5 Tramline Frankfurt



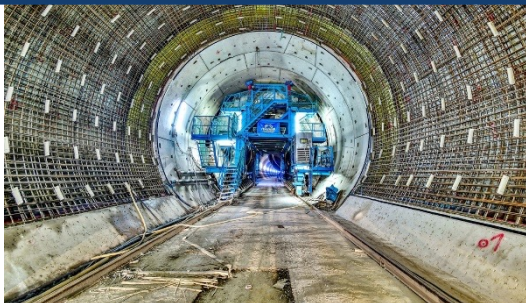
Government Services

Vogelweh Elementary School Kaiserslautern



Tunnelling

Fildertunnel



Specialist Civil Engineering

Gewerbehöfequartier Go West



Traffic Route Construction

A100 Berlin



Industrial Construction

Siemens Healthineers



SEGMENT PL - POLAND

PORR'S SECOND-LARGEST SEGMENT

Building Construction
Andersia Silver



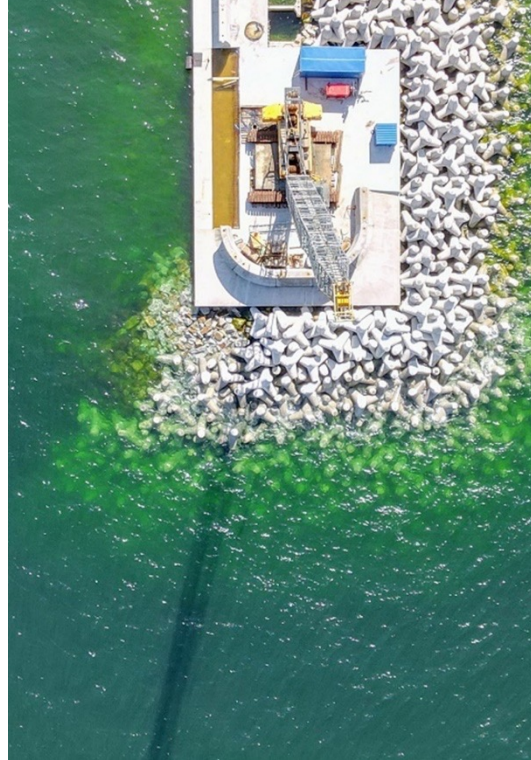
Civil Engineering
Tunnel TS 26



Railway Engineering
Transfer point Bytom



Specialist Civil Eng.
Wavebreaker Gdansk



Industrial Construction
Fuel tanks Boronow



Special Projects
Flood retention basin Roztoki



SEGMENT CEE - CZECH REPUBLIC, SLOVAKIA, ROMANIA

STRONG EXPERTISE IN MAJOR INFRASTRUCTURE PROJECTS

Building Construction

Marina Nova Prague, CZ



Civil Engineering

Gradiştea, RO



Specialist civil Engineering

Bucharest Henri Coanda International Airport, RO



Railway Engineering

Railway line Trenčianska, SK



Special Projects

Highway Sibiu Pitesti, RO



SEGMENT INFRASTRUCTURE INTERNATIONAL FOCUS ON THE PROJECT BUSINESS

Tunnelling
U5 Tramline Frankfurt, DE



Infrastructure
Minnevika Bridge, NO



Slab Track
Metro Doha Greenline, QAT



3 Sustainability and More



THE FUTURE OF CONSTRUCTION

4 D'S

Deglobalisation

Resilience & regionalisation

DORR



Nearshoring and reshoring to local supply chains

- Industrial construction
- Storage buildings
- R&D facilities
- Clean rooms
- Data centers
- Local logistics
- Regional infrastructure

Decarbonisation

+ 1.5 °C max. & climate neutrality

DORR



Energy transformation and circular construction

- Geothermal energy
- Pipeline construction
- Environmental Engineering
- Power plants
- Recycling
- Thermal renov. & revitalisation

Digitalisation

Artificial intelligence & digital twins

DORR



Digital transformation and operational excellence

- BIM 3D - 5D
- Big Data
- Digital processes
- LEAN Construction
- Robotics
- AR, VR
- Digital site
- Drones
- 3D printing

Demographic change

Urbanisation & aging society

DORR



Smart infrastructure, affordable housing for generations

- Railway, Slab Track
- Tunnels, bridges
- Roads
- Rehab clinics, medical centers
- Residential
- Hotels, educational buildings

ESG-RATINGS

AMONG THE BEST PERFORMERS IN THE INDUSTRY



B
Climate Change & Water

C+
Prime Segment

AA
Best in industry

Bronze
Top 17% of
construction industry

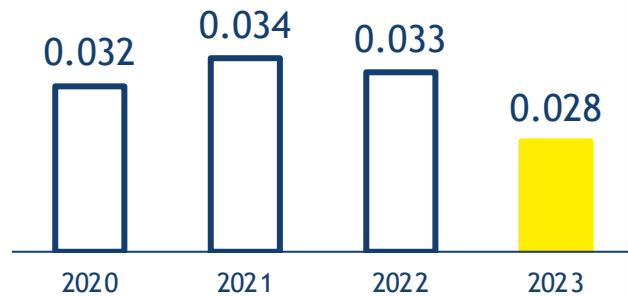


INSIGHTS INTO ESG@PORR

SELECTED KPI (1/2)

Decarbonisation

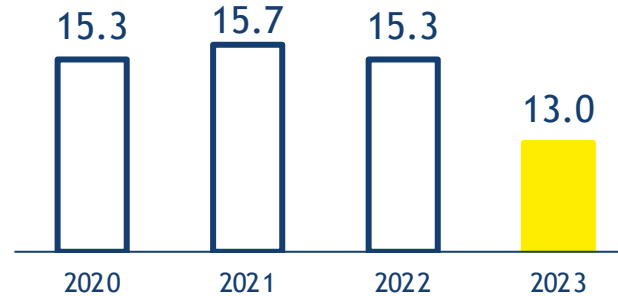
Intensity of GHG emissions
(Scope 1+2 in t CO₂e)



- Expansion of **ISO 50001** now including Romania
- **Photovoltaics** rollout to 30 roofs (22 GWh of energy production)
- **80 % local procurement**

Occupational Safety

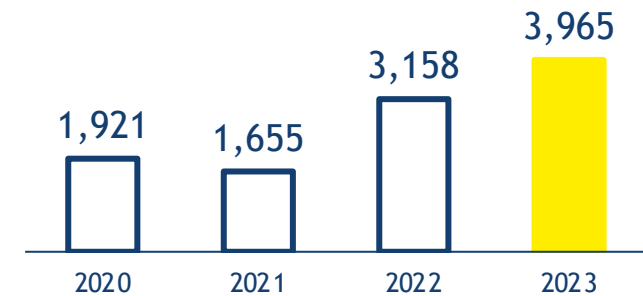
Work-related injuries
(rate*)



- Safety Walks: management as role models
- **Safety Check Card** attached to working clothes, always at hand
- **Mandatory training** courses including knowledge checks

Compliance

Anti-corruption training
(number)



- Re-certification of **ISO 37001 & ISO 37301**
- Compliance training program for apprentices
- Construction Compliance Ambassadors

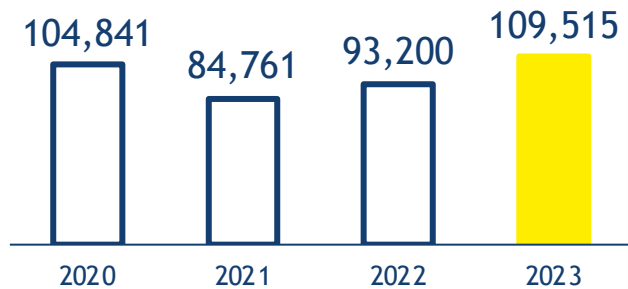
* Work-related injuries on the basis of 1,000,000 working hours

INSIGHTS INTO ESG@PORR

SELECTED KPI (2/2)

Circular Economy

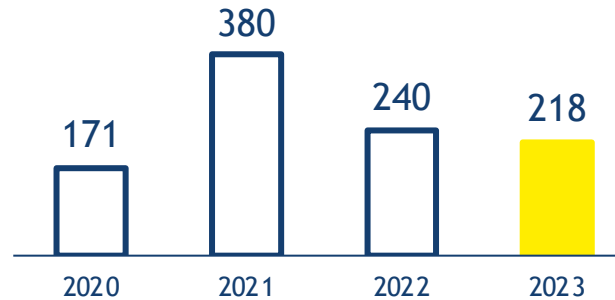
Recycled materials used (tonnes)



- Launch of 1st gypsum to gypsum recycling plant in AT
- Treatment of 1,700 tonnes of mineral wool waste
- Outlook: Concrete recycling with UP!crete

Habitats

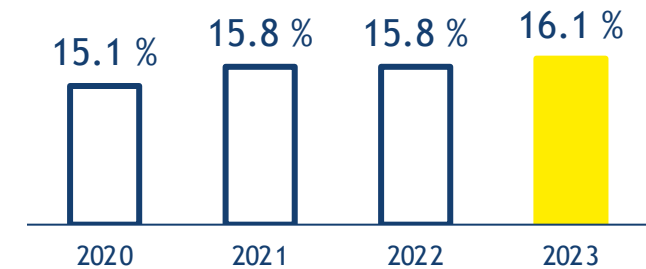
Total water consumption (Tm³)



- Maximum quality, minimum quantity in wastewater with Water Policy
- 500 beehives erected under the Bee@PORR initiative

Working Worlds

Share of female staff (in %)



- Construction is a people business: 91 nations
- Women@PORR initiative providing Group-wide Online Lunch Roulettes
- 39% women in junior management trainings

WHAT WE BUILD ON OUR FIVE PRINCIPLES



Reliability

Commit - don't command.
Responsibility starts with me.
Rules are not a matter of
personal choice.



Pioneering Spirit

Always one step ahead.
Entrepreneurs at heart.
Mistakes are a learning opportunity.



Appreciation

Diversity - definitely.
I am not the center of the universe.
Fairness is a matter of honour for us.



Passion

Working together for the best solution.
No compromises when it comes to construction.
The best minds at PORR.



Shoulder to Shoulder

Dare to go beyond your silo.
No lone wolves, please.
Information & knowledge should be shared.

BUILD ON US - GROW WITH US

PORR AS EMPLOYER



Unique

Reliability. Shoulder to Shoulder.
Appreciation. Passion. Pioneering Spirit.
Our five principles connect us.



Leader in technology

Our pioneering spirit has allowed us to be a
technology leader in the construction
sector for more than 150 years.



Sustainable

Doing business sustainably is a core
component of our responsibility towards
society.



International

We are active across Europe and
internationally, with staff from more than
90 countries.



Nurturing

We offer a multitude of options for further
education and training so you can develop
your soft skills and grow professionally.

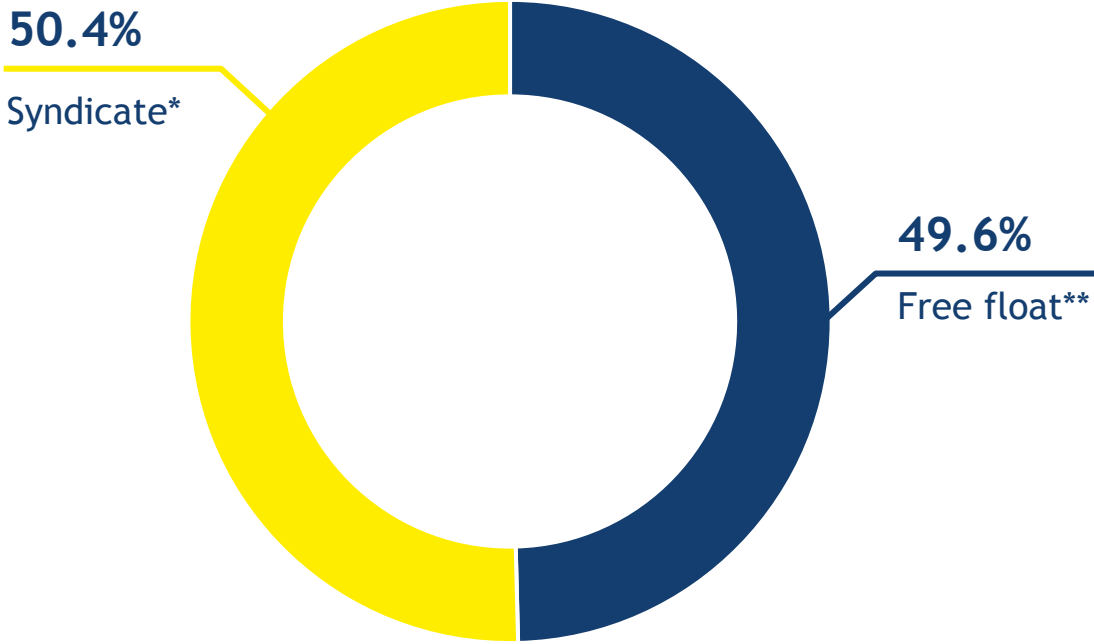


Social

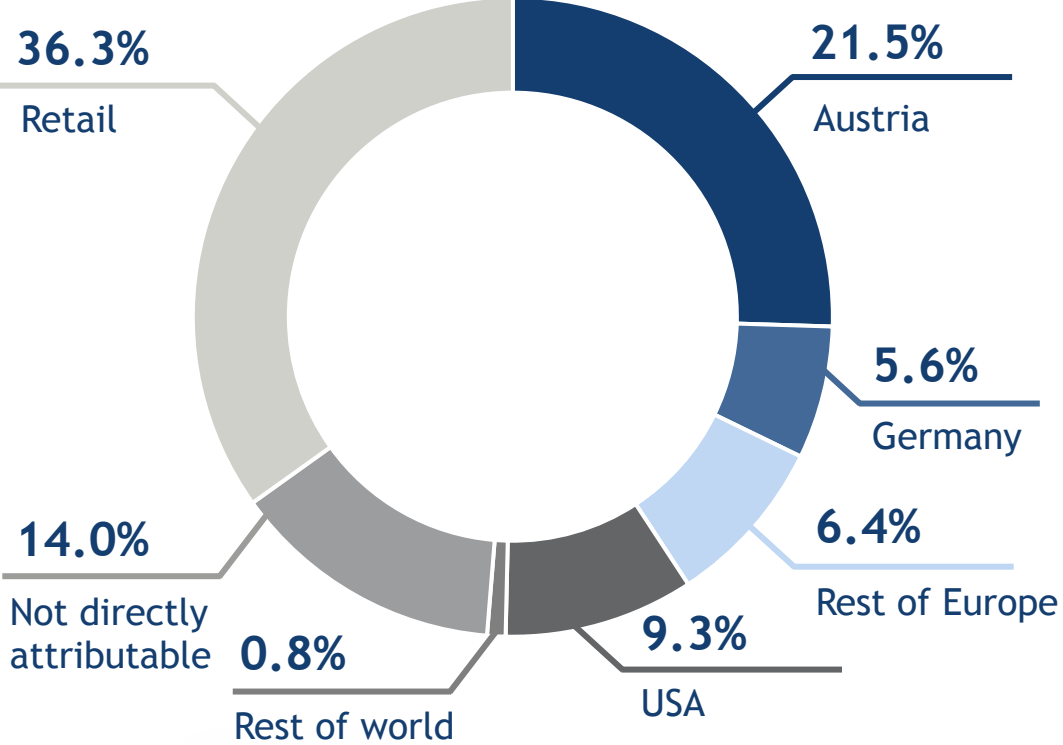
We care for you. We have inhouse
initiatives to promote diversity and equal
opportunities with We@PORR

OWNER-RUN WITH A STABLE SHAREHOLDER STRUCTURE

Shareholder structure



Free float



*Syndicate (Strauss Group, IGO Industries Group)

**Free float (4.3% Heitkamp Construction AG and 4.9% PORR Management as well as own shares PORR AG)

OUTLINE OF THE ORGANISATIONAL STRUCTURE

LEAN AND EFFICIENT

PORR AG

pde Integrale Planung

PORR Equipment Services

PORR Bau GmbH

PORR Beteiligungen und Management

Shared Service Center

Operative Segmente

AT / CH

DE

PL

CEE

Infrastructure International

Austria
Switzerland

Germany

Poland

Czech Republic
Slovakia
Romania

Tunnelling
GCC
Norway

KEY FINANCIAL INDICATORS

FIGURES AT A GLANCE

Key Earnings Figures (EUR m)	2023	Change	2022	2021	2020
Production output ¹	6,577	5.6%	6,226.4	5,727.3	5,185.3
Revenue	6,048.5	4.5%	5,786.0	5,169.8	4,651.8
EBIT	140.3	16.8%	120.1	95.2	-37.2
EBT	130.7	18.8%	110.0	85.4	-51.0
Net profit	95.0	14.9%	82.6	61.4	-42.4
EPS	2.21	34.3%	1.65	1.18	-2.28
Key Assets and Financial (EUR m)	31.12.2023	Change	31.12.2022	31.12.2021	31.12.2020
Total assets	4,135	-0.3%	4,146.8	4,065.0	3,509.5
Equity	860	7.7%	798.9	824.4	650.5
Equity ratio	20.8%	1.5 PP	19.3%	20.3%	18.5%
Net debt	-40	-32.1%	-59.0	-65.3	134.6
Key Share Data	31.12.2023	Change	31.12.2022	31.12.2021	31.12.2020
Number of shares	39,278,250	-	39,278,250	39,278,250	29,095,000
Market capitalisation (EUR m)	498.8	8.0%	461.9	539.7	375.3

¹ The production output corresponds to the output of all companies and consortiums (fully consolidated, equity method, proportional or those of minor significance) in line with the interest held by PORR AG. The figures have been rounded off using the compensated summation method. Absolute changes are calculated using the rounded values, relative changes (in percent) are derived from the non-rounded values.

4 Our References

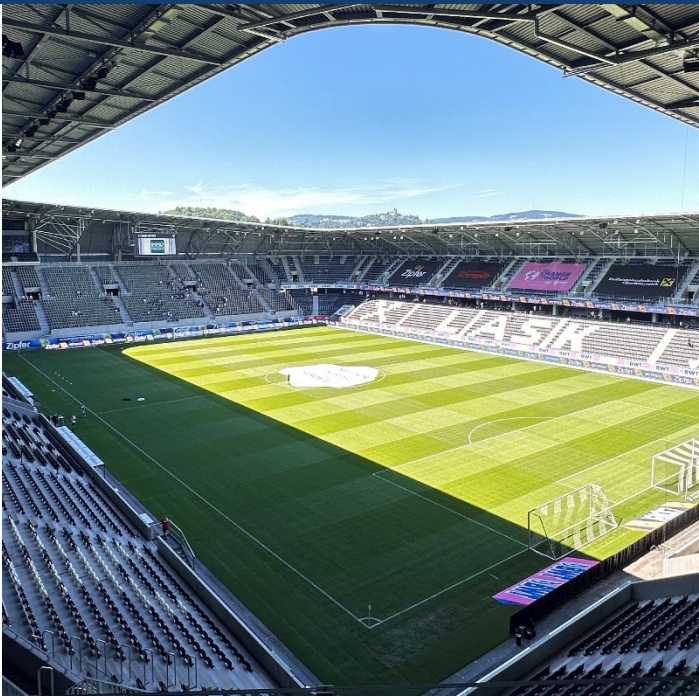


PORR SHAPES CITYSCAPES AND LANDSCAPES

BUILDING CONSTRUCTION REFERENCES

Raiffeisen Arena Linz, AT

Built 2021 - 2023



Vio Plaza Vienna, AT

Built 2020 - 2023



LVM Kristall Munster, DE

Built 2020 - 2022



PORR SHAPES CITYSCAPES AND LANDSCAPES

BUILDING CONSTRUCTION REFERENCES

Franklintower Zurich, CH

Built 2019 - ongoing



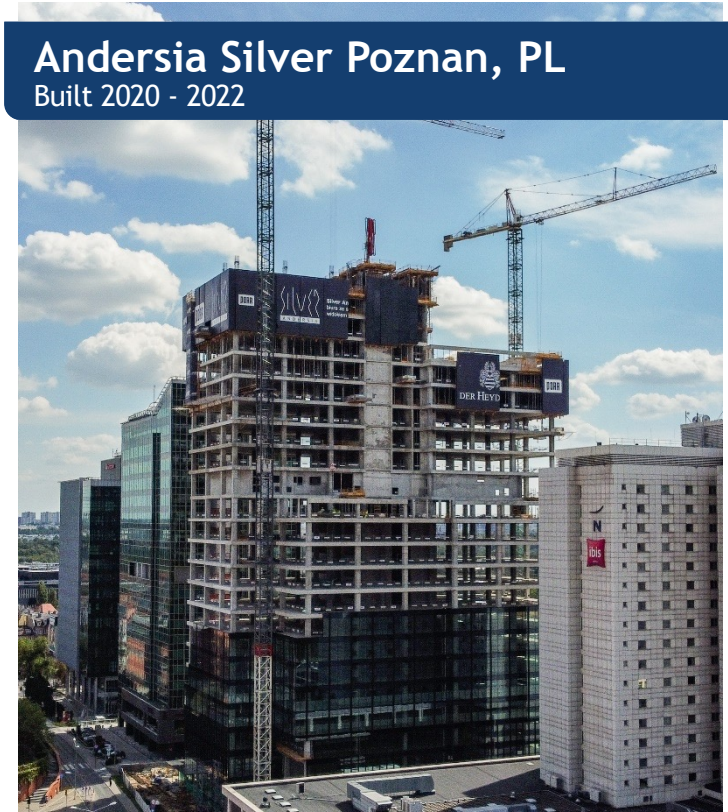
European Patent Office Vienna, AT

Built 2022 - ongoing



Andersia Silver Poznan, PL

Built 2020 - 2022



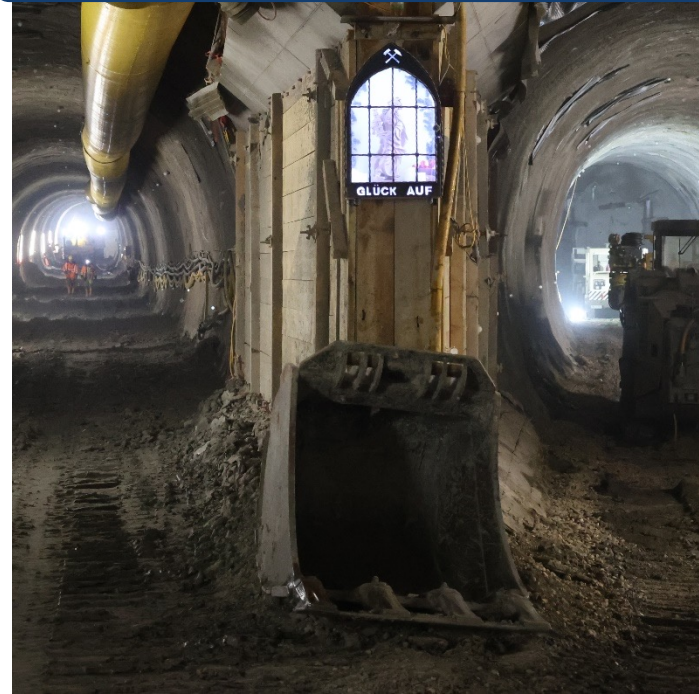
THE BASIS FOR MODERN COOPERATION

CIVIL ENGINEERING & INFRASTRUCTURE REFERENCES

Joint power plant Inn, AT
Built 2014 - 2020



Consortium U2/U5 Vienna, AT
Built 2021 - ongoing



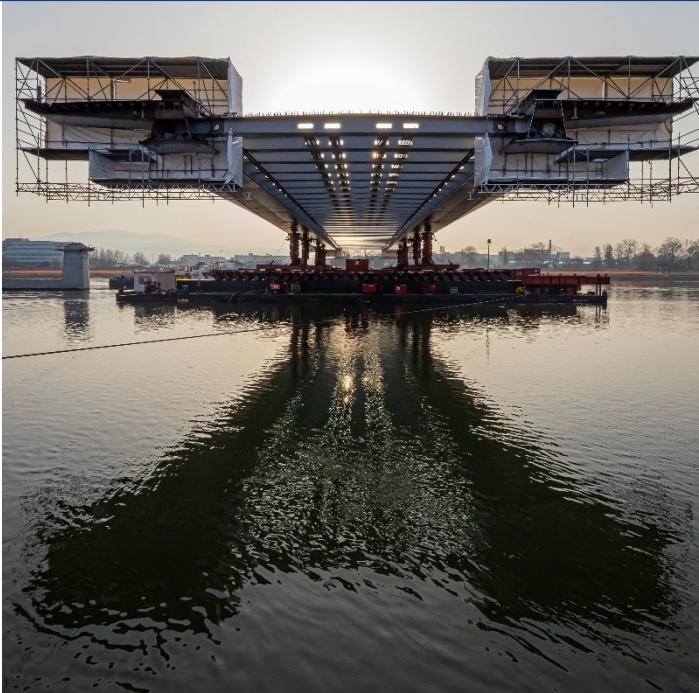
Railway station Pacejov, CZ
Built 2019-2022



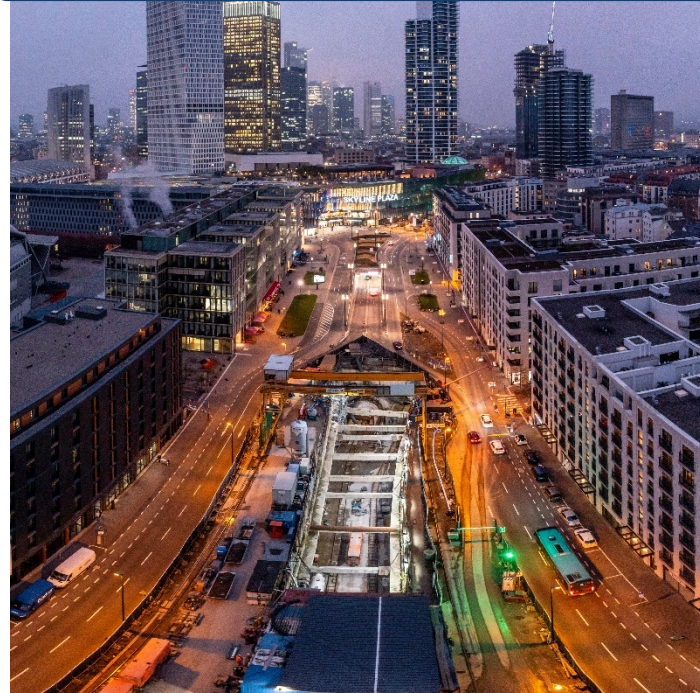
THE BASIS FOR MODERN COOPERATION

CIVIL ENGINEERING & INFRASTRUCTURE REFERENCES

Danube Bridge Linz, AT
Built 2018 - 2021



U5 tramline Frankfurt, DE
Built 2017 - ongoing



Brenner Basetunnel H53, AT
Built 2018 - ongoing



FOR A GREEN FUTURE

ENVIRONMENTAL ENGINEERING REFERENCES

Demolition Drammen Bridge, NO
2022



Earthworks HWRHB Fahrafeld, AT
2020-2023



Recycling Center Himberg, AT
wholly owned PORR subsidiary since 2013



FOR A GREEN FUTURE

ENVIRONMENTAL ENGINEERING REFERENCES

Gravel Washing Plant Himberg, AT
in operation since 2010



Landfill Linz, AT
in operation since 1990



Stone Quarry Gradenberg, AT
wholly owned PORR subsidiary since 2005



INTEGRATED PLANNING AT THE HIGHEST LEVEL

DESIGN & ENGINEERING REFERENCES

Wien Museum, AT

Built 2020 - 2023



Frankfurter Allee, DE

Built 2017 - 2021



Raiffeisen Corner St. Pölten, AT

Built 2020 - 2022



INTEGRATED PLANNING AT THE HIGHEST LEVEL

DESIGN & ENGINEERING REFERENCES

Koralmtunnel, AT

Built 2021 - ongoing



PEMA 3 Innsbruck, AT

Built 2018 - 2019



Residential complex Q6 Graz, AT

Built 2019 - 2021



**CONSTRUCTION IS A
PEOPLE BUSINESS**



PORR AG . Absberggasse 47 . 1100 Vienna . Austria
T +43 50 626-0 . office@porr-group.com

PORR Bau GmbH . Absberggasse 47 . 1100 Vienna . Austria
T +43 50 626-0 . office@porr.at

PORR GmbH & Co. KGaA . Walter-Gropius-Straße 23 . 80807 Munich . Germany
T +49 89 71001-0 . info@porr.de

PORR SUISSE AG . Seedorferstrasse 56 . 6460 Altdorf . Switzerland
T +41 41 875 01 01 . info@porr.ch

PORR S.A. . Ul. Hołubcowa 123 . 02-854 Warsaw . Poland
T +48 22 266 99 00 . centrala@porr.pl

PORR a.s. . Dubečská 3238/36 . 100 00 Prague 10 . Czech Republic
T +420 267 226-111 . porras@porr.cz

PORR s.r.o. . Green Point Offices . Mlynské Nivy 49 . 821 09 Bratislava . Slovakia
T +421 2 58 107 001 . office@porr.sk

PORR Construct S.R.L. . Metrooffice Building . Dimitrie Pompeiu 5-7 . 020335 Bukarest .
Sector 2 . Romania
T +40 21 312 65-00 . construct@porr.ro